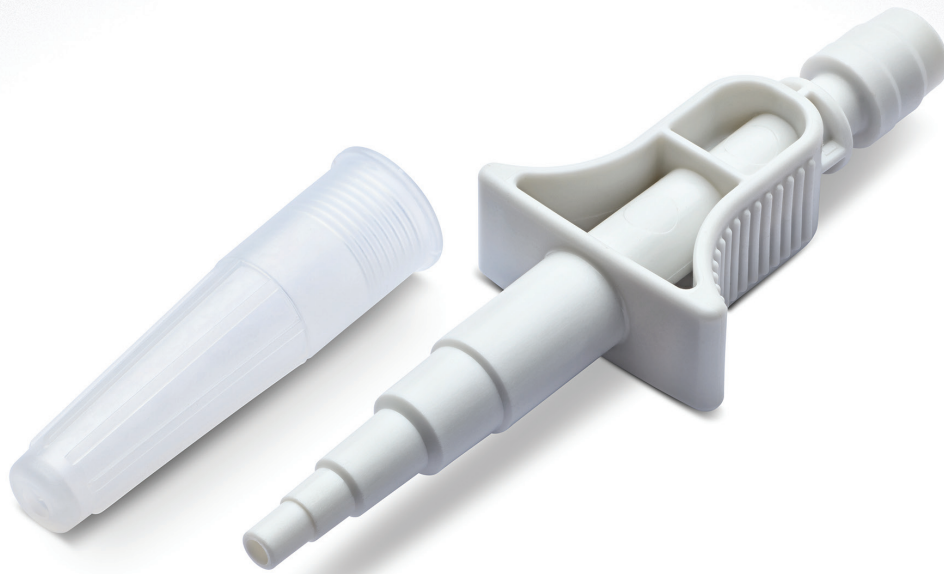


Simplivia Closed System Drug Transfer Devices



Chemfort® Catheter Adaptor

TECHNICAL DATASHEET

The Chemfort® Catheter Adaptor is intended for the safe administration of drugs directly into a urinary catheter. The Chemfort® Catheter Adaptor is a next generation of the Simplivia Catheter Adaptor. The Chemfort® Catheter Adaptor has an ergonomic design that is user friendly and is made from PP that can be used with all known hazardous drugs. Chemfort® Catheter Adaptor fits all sizes of standard catheters and converts an open catheter connection to a closed Chemfort® connection.

For the preparation of the instilled drug, a Chemfort® Syringe Adaptor/Syringe Adaptor Lock and Chemfort® Vial Adaptor are used to safely transfer the drug from the vial to the syringe. The Syringe Adaptor is then connected for administration to the patient's catheter via the Chemfort® Catheter Adaptor connection. Its Intuitive design makes it easy to use: with minimal effort, both components can be connected and a simple push on the wings of the Syringe Adaptor will disconnect them again. The "click" sound during manipulation indicates a safe and secure connection.

Indication for use cleared by the FDA:

Chemfort® is a Closed System Transfer Device (CSTD) that mechanically prohibits the release of drugs, including antineoplastic and hazardous drugs, in vapor, aerosol or liquid form during preparation, reconstitution, compounding and administration. Chemfort® thus minimizes exposure of individuals, healthcare personnel, and the environment to hazardous drugs. Chemfort® prevents the introduction of microbial and airborne contaminants into the drug or fluid path for up to 7 days.

Chemfort® Catheter Adaptor

TECHNICAL DATASHEET

Order Information

Article number / Reference	MG245591
User box quantity	50 pcs
Transport box quantity	100 pcs

Product Characteristics

Product Technical data

External fitting	Urinary catheter
Fluid path volume	0.7 ml
Septum piercings	Up to ten times
Shelf life	3 years
Sterilization	Ethylene oxide

Tolerates disinfection with alcohol 70% and chlorhexidine in alcohol (5 mg/70% alcohol)

Material Specifications

PVC Free. Non-pyrogenic. Free from latex, lead, cadmium, arsenic and chrome. Meets standards and regulations with regards to the environment.

Component

Material

Connector for urinary catheter	Polypropylene
Protective vented cap	Polyethylene
Elastomeric sealing	Polyisoprene

Regulation

Disposal of components should be according to local regulations and procedures for handling of hazardous drugs

Symbols taken from ISO 15223-1:2021



Consult instructions for use



Medical device



Single barrier system and sterilized using ethylene oxide



Non-pyrogenic



Do not re-sterilize



Do not re-use



Do not use if package is damaged



Keep dry



Keep away from sunlight



Donawa Lifescience Consulting Srl
Piazza Albania 10,
00153 Rome, Italy



21 Yitzhak Sadeh St.
Raanana Israel 4352621
Global Translations



Simplivia Healthcare Ltd.
North Industrial Zone
P.O. Box 888
Kiryat Shmona, Israel 1101801



www.simplivia.com



info@simplivia.com



Follow us

